



ART Cohort Data from Cambodia's Continuum of Care Model in Battambang: Sexual Behavior evaluation among PLHIV

*Guy Morineau, Laurent Ferradini
National AIDS Conference
Family Health International
Sept. 10-12th 2008*

Background

- The Cambodian national continuum of care (CoC) framework was endorsed by the MoH in 2003
- The first CoC site was started in 2003 piloted by the NCHADS together with FHI in MOUNG RUSSEI OD RH located in a rural area of Battambang (BTB) province
- The CoC framework was proven to be feasible and was replicated in BTB RH in June 2004
- The CoC model used the existing health personnel motivated by performance based incentives managed by the Government

Quality of Life (QoL) study : Objectives

- To analyze patterns and changes over time of PLHIV initiated on ART according to National protocols at BTB RH
- Focusing on the analysis of:
 - Survival
 - Health-related quality of life
 - Stigma and discrimination
 - Productivity
 - **Sexual behaviors**

Study design : Recruitment

- All out-patients initiating ART at BTB RH on days volunteers were present at the hospital were proposed to participate
- Enrollment depended on volunteer availability and was inconsistent over time
- Data collected by PLHA volunteers
- Non included:
 - Patients who could not walk to the interview room (invalids)
 - Severe OI
 - Co-infections TB/HIV

Study design : data collection

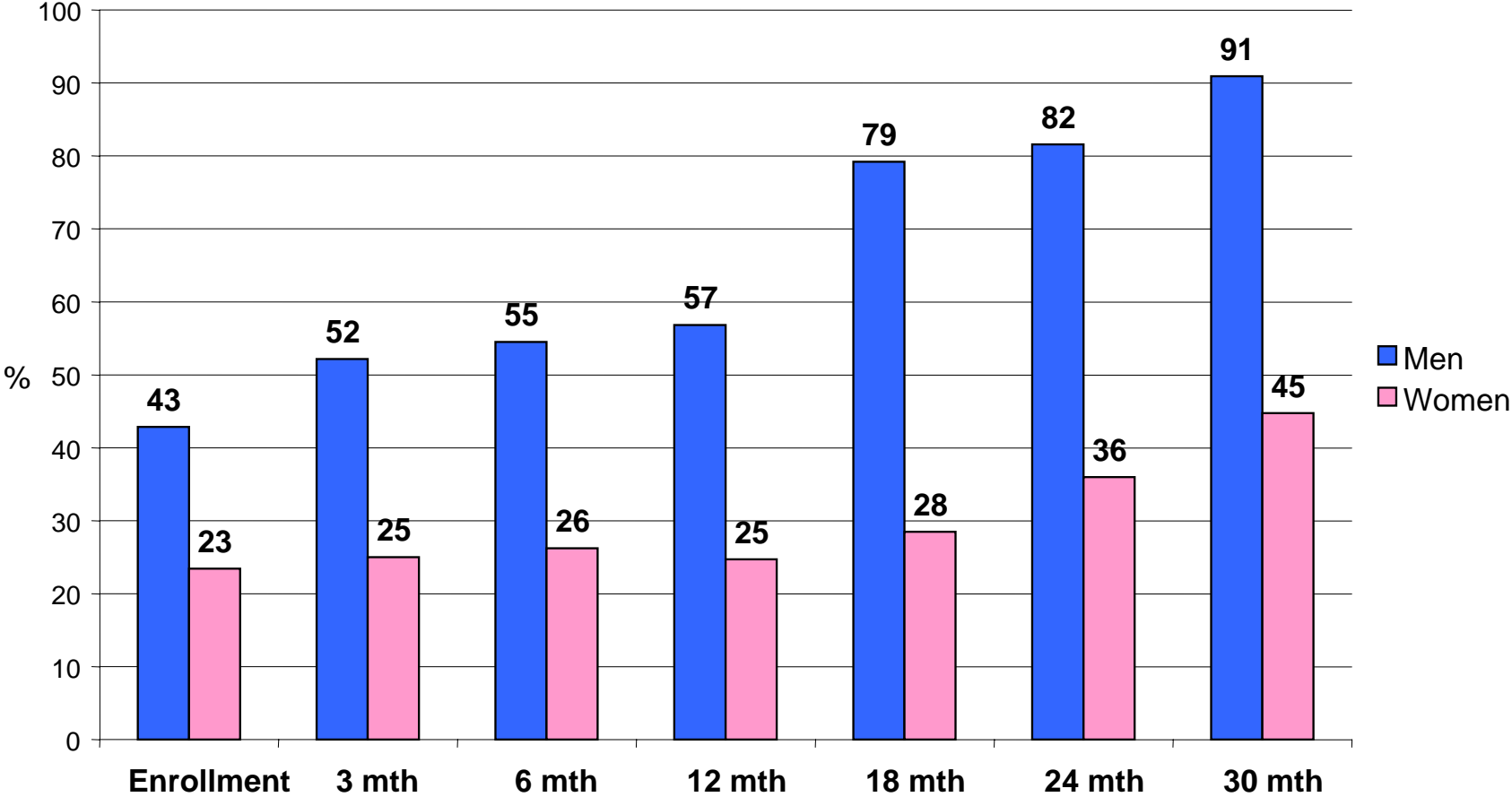
- From March 2005 to January 2008
- At initiation of ARV and at 3, 6, 24, 30 and 36 months of follow-up
- Through face to face interviews using standard questionnaires including:
 - Socio-demographics
 - Quality of life scores (MOS SF 21)
 - Reporting of discrimination
 - **Sexual activity**
- CD4 count and weight (BMI) retrieved from clinical files
- Survey costs limited to incentives for volunteers (total cost <1000 \$ per year)

Results: enrolment and follow-up

- Among 1443 patients who initiated ART at Battambang hospital, 549 (38%) were included
- No refusal to participate
- The study cohort = 645 person-year
- Median follow-up duration = 1.2 year
- Outcomes:
 - Dead = 37 (7%)
 - Lost to follow-up = 23 (4%)
 - Transferred to other hospital = 30 (5%)

Sexual Behavior : Proportion of sexually active persons increased over time

Sexually active in the past 6 months, by gender and duration of follow-up



More men than women have been sexually active during follow-up

- Incidence of sexual activity in the past 6 months is 29% person-6 months:
 - 51% person-6 month for men
 - 17% person-6 month for women

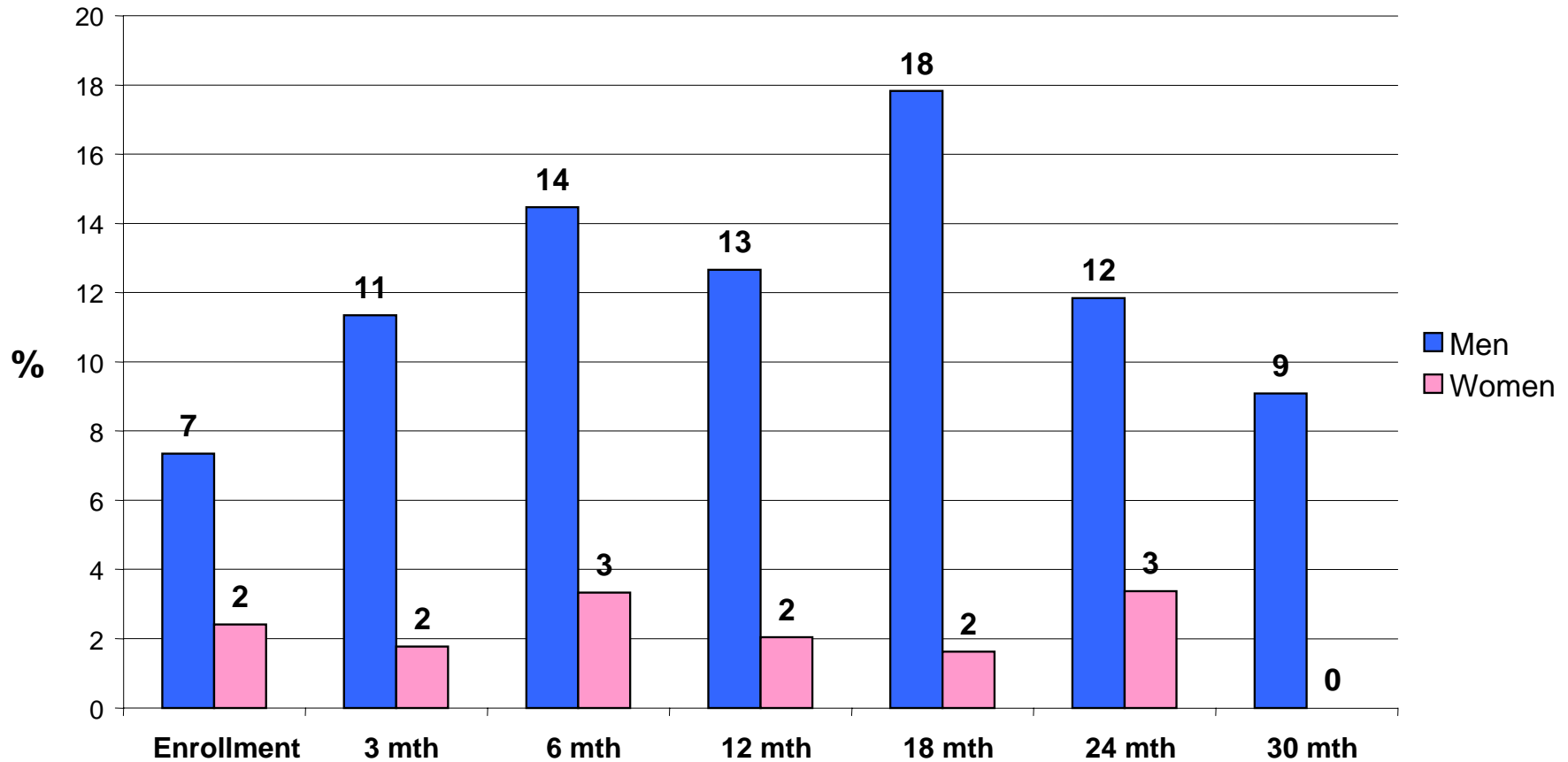
Factors associated with incidence of sexual activity

- Male gender
- Young age
- Single status
- Higher education status
- High BMI
- high physical functioning score
- high social functioning score

CD4 count is not associated with sexual activity

Sexual Behavior: No trend of having sex with multiple partners

Had multiple partners in the past 6 months



Sexual multiple partnership : Frequency and risk factors

- 15% of the participants had multiple partners during the follow-up period
- 24% of those sexually active had multiple partners during the follow-up
- Incidence of multiple partnership in the past 6 months was:
 - 15 per 100 person-6 months for men
 - 2 per 100 person-6 months for women
- Risk factors of sexual multiple partnership:
 - Male gender
 - Single status
 - High BMI

Sexual Behavior: unprotected sex

- 2% of all the patients reported unprotected sex at least once during their follow-up
- Among sexually active: 9% of the men and 13% of the women had unprotected sex
- Incidence of unprotected sex was 1.4 per 100 person-6 months
- Factors associated with unprotected sex
 - Female gender
 - Age below 40
 - Living with a regular partner

Limitations of the study

- Enrollment only when volunteer presents
- Volunteer not blinded (i.e. know which follow-up visit the respondent is attending).
- Non gender matched interviews may have biased responses on sexuality; respondent bias?

Conclusions on sexual behavior findings

- The proportion of sexually active persons increased during follow-up
- 15% of the men engage sex with multiple partners every 6 months
- Unprotected sex is a rare event (1.4% engage in unprotected sex every 6 months; underestimated?)
- Young married women are those most exposed to unprotected sex

Special Acknowledgements to

- All PLHIV who participated in the survey
- The PLHIV who volunteered to collect data
- Battambang referral Hospital staff
- The Provincial Health Director in Battambang
- NCHADS
- USAID



ស្រុកអន្តរាគមន៍